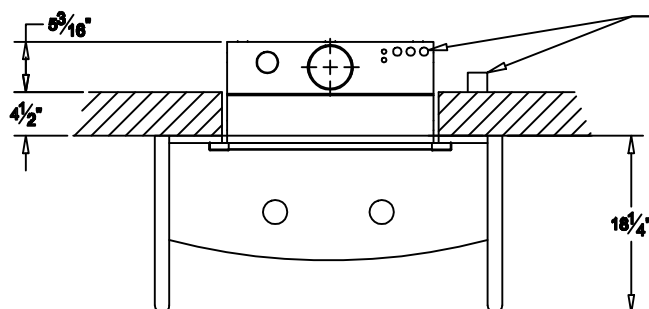


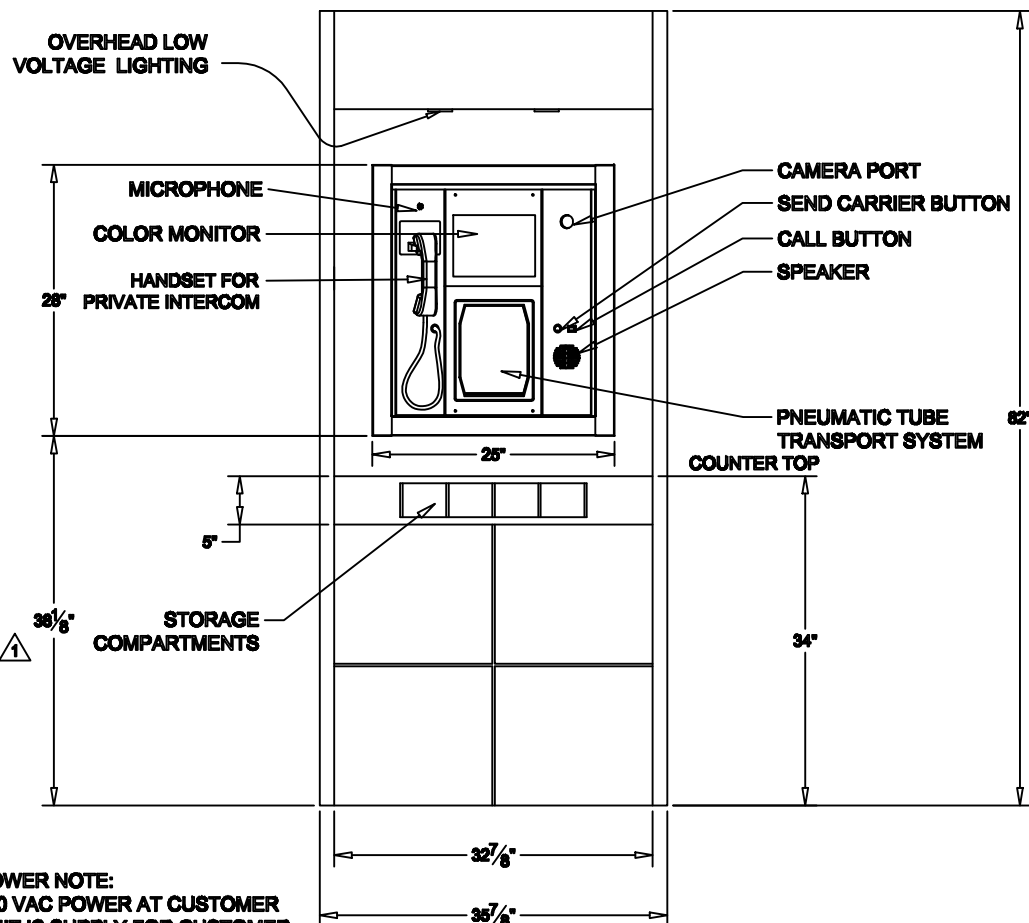
REV.-1	DATE: 01/008	IRT M.O. HEIGHT WAS 41", NOW 40"
REV.-2	DATE:	
REV.-3	DATE:	



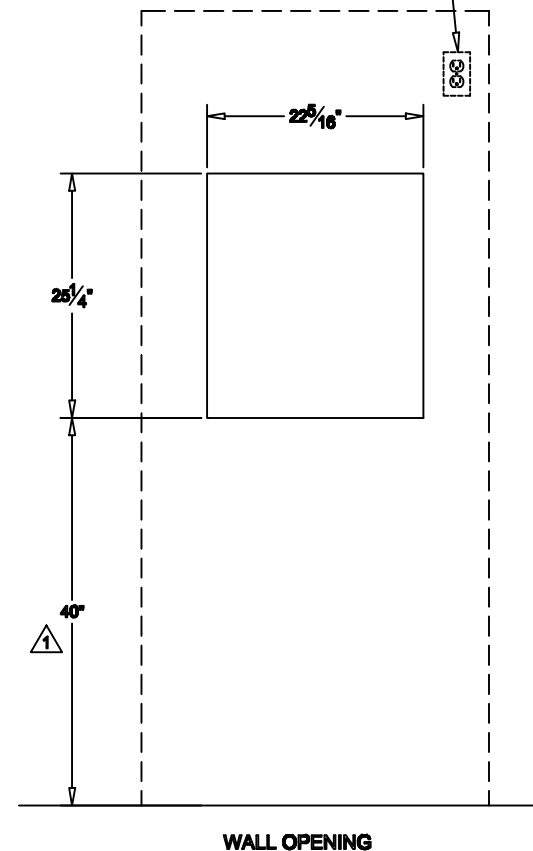
**POWER REQUIREMENTS:**  
120 VOLT DUPLEX OUTLET  
LOCATED ON REAR OF WALL.

**NOTE:**  
UNIT CAN BE LOCATED AGAINST  
4.5" WALL WITH TUBING AND  
ELECTRICAL CONNECTIONS  
LOCATED BEHIND WALL.  
ACCESS TO ALL INTERNAL  
COMPONENTS GAINED  
THROUGH THE FRONT OF UNIT.

**POWER REQUIREMENTS:**  
120 VOLT DUPLEX OUTLET  
LOCATED ON REAR OF WALL.



**POWER NOTE:**  
120 VAC POWER AT CUSTOMER  
UNIT IS SUPPLY FOR CUSTOMER  
DOOR MOTOR ONLY.  
MONITOR POWERED FROM  
E0740 VIDEO POWER KIT,  
CAMERA AND HANDSET ARE  
POWERED FROM 24VAC  
TRANSFORMER MOUNTED IN  
ELECTRICAL CONTROL UNIT.



PROPRIETARY AND CONFIDENTIAL  
THESE DRAWINGS ARE THE PROPERTY  
OF HAMILTON SAFE CO. AND SHALL  
NOT BE REPRODUCED, COPIED, USED  
AS THE BASIS FOR MANUFACTURE OR  
SALE OF APPARATUS WITHOUT  
PERMISSION

DESCRIPTION	
IRT-5000 CUSTOMER UNIT COMPACT SURROUND WITH FLUSH BACK PANEL	
DRAWING/MODEL NUMBER	DATE
99-1018	10/08/2021